

0.125 ALUMINUM PANELS (PXS SERIES)

100% Recyclable (Low Energy Foot Print - LEED)

Post Painted Corners

Heat Transfer Quality (can be used for heating and cooling)

Superior Impact Resistance

Any Color (AAMA 2605) or Wood Grain (Post Painted)

Perfect Color Match Painted Extrusions and Trims

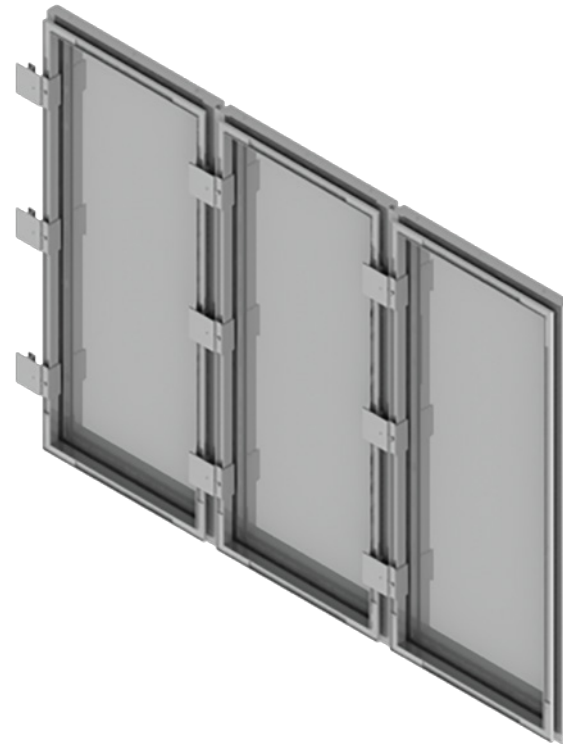
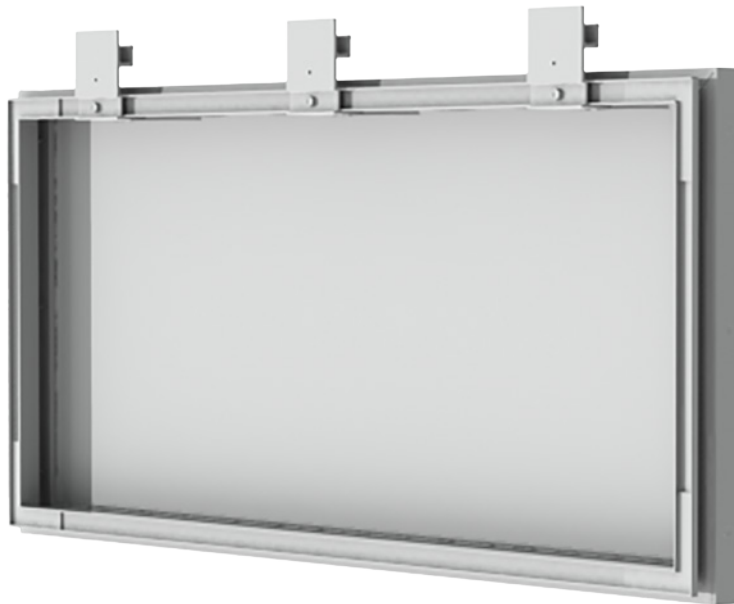
Marine Alloy (Superior Salt Spray Resistance)

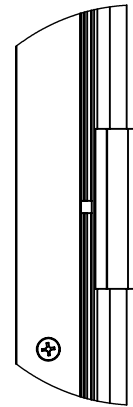
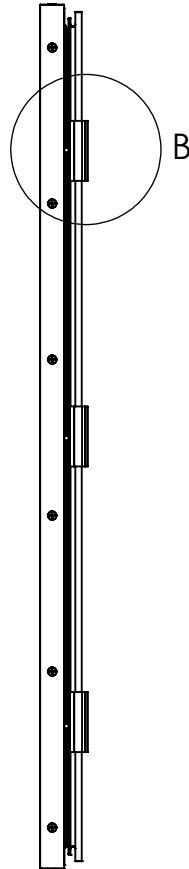
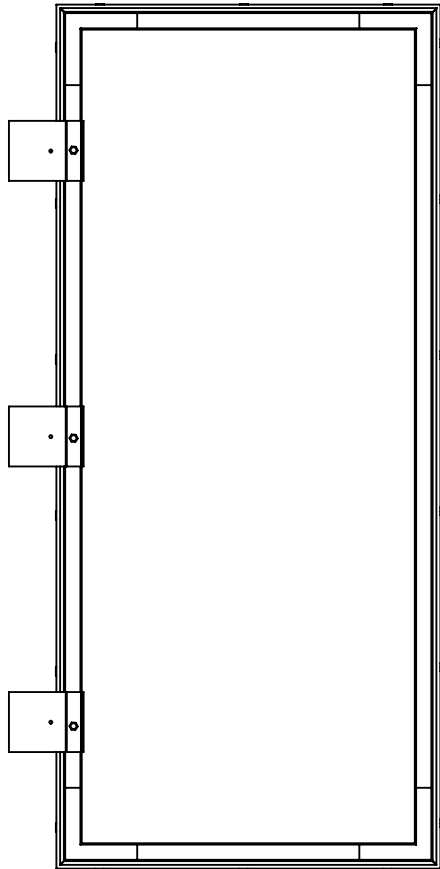
Fire Rated Firewall Assembly

100% Locally Manufactured (LEED)

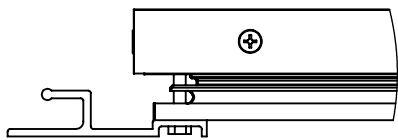
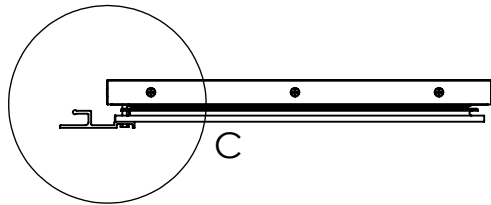
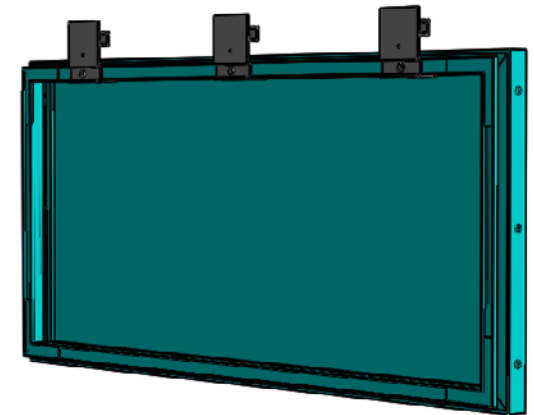
Competitive Price

Reasonable Turn-Around Time (within a few weeks)





DETAIL B
SCALE 1 : 3



DETAIL C
SCALE 1 : 3

PROPRIETARY AND CONFIDENTIAL
 THE INFORMATION CONTAINED IN THIS DRAWING IS THE SOLE PROPERTY OF PANELEX INDUSTRIES LD. ANY REPRODUCTION IN PART OR AS A WHOLE WITHOUT THE WRITTEN PERMISSION OF PANELEX INDUSTRIES LTD. IS PROHIBITED.

		DIMENSIONS ARE IN INCHES TOLERANCES: FRACTIONAL ± ANGULAR: MACH ± BEND ± TWO PLACE DECIMAL ± THREE PLACE DECIMAL ±		NAME	DATE	PANELEX INDUSTRIES	
		MATERIAL: 0.125" ALUMINUM PANEL		R.R	11/05/14		
		FINISH : POST PAINTED : COLOR AS PER CLIENT REQUEST		CHECKED		SIZE A	
NEXT ASSY		USED ON		ENG APPR.			
APPLICATION		DO NOT SCALE DRAWING		MFG APPR.		WEIGHT:	
				Q.A.		SHEET 1 OF 1	
				COMMENTS: 4MM COMPOSITE PANELS PROPRIETARY EXTRUSIONS AND CLIPS COUNTERSUNK SS FASTENER OR AS SPECIFIED BY CLIENT.		REV.	
						SCALE:1:10	